

## Multipurpose Vessel

### mv «YAMAL BERKUT»

### KM ★ IA AUT-1 OMBO CONT (deck, hold 1,2) DG (bulk)



#### Identification

Shipyard and year of built	Hudong Zhonghua Shipyard, China, 2008
Flag, port of registry	Russia, Arkhangelsk
Call sign	TBN
Vessel's class	KM*IA AUT-1 OMBO CONT (deck, hold 1,2) DG (bulk)
IMO №	9368338
Licenses	Carriage of dangerous goods by sea transport (all classes except IMO class 7)

#### Dimensions

Length overall	143,00 m
Beam	21,50 m
Moulded depth	13.30 m
Air draught	35.77 m
Max draught	9.71 m
Summer deadweight	17 299 t
Winter deadweight	16 750 t
Gross tonnage	11 864 t
Net tonnage	5 650 t

#### Tween deck

Total 1463 m<sup>2</sup> m<sup>2</sup>, in two holds

Panel №	№ of Panels	L x B	Weight
1	1	3.220 x 7.694	6
2-3	2	6.480 x 12.570	25
4-14	11	6.480 x 17.660	33
Total	14		419

#### Max permissible loading

On hatches	abt. 1.75 mt/m <sup>2</sup> ;
On tween deck	abt. 4,0 mt/m <sup>2</sup>
On tanktop	abt. 20.0 mt/m <sup>2</sup>

Crew	15 persons
------	------------

#### Key data

##### Main engine, ADG

Main engine	WARTSILA 8L46B 7800 kW / 500 rpm
Aux. engines	3 x MITSUBISHI / 500kW / 1200 rpm
Emergency generator	MITSUBISHI 200kW/1800rpm
Bow Thruster	Yes / 750kW
Propeller	Controllable-pitch propeller, 4 blades
Specials	Freshwater Generator 15 m <sup>3</sup> / 24H

##### Tank's capacity

Fuel oil (IFO)	abt. 1.448 cbm
Diesel oil (MGO)	abt. 218.11 cbm
Ballast water	abt. 5412.12 cbm
Freshwater	281.04 cbm

##### Speed and consumption

	Condition	Kn	Fuel oil	MGO
Sea	In ice		27.5 mt	3.0 mt
Sea	Ballast	15	27.5 mt	0.0 mt
	Loaded	13	27.5 mt	0.0 mt
Port	w/o cargo operation		0.0 mt	1.5 mt
	with cargo operation		0.0 mt	3.0 mt
SECA	At sea		0.0 mt	30.0 mt
	Cargo operation(port)		0.0 mt	3.0 mt

##### Cranes «LIEBHERR» (port side)

			60 t	16 m
1	1 crane	1 x 60	40 t	28 m
			60 t	16 m
2	1 crane	1 x 60	40 t	28 m
			60 t	16 m
3	1 crane	1 x 60	40 t	28 m
			60 t	16 m

##### Containers capacity

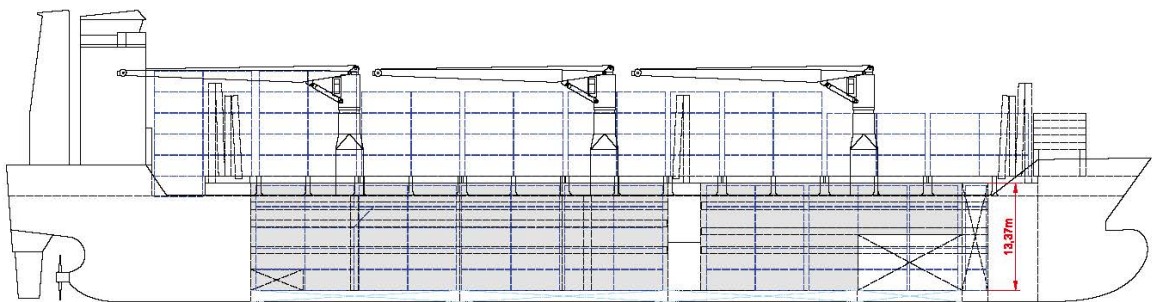
	20' or	40' and	20'
Holds	446	202	42
Deck	421	226	61
Total	867	428	103

60 reefers can be carried, all plugs are fitted on deck  
Socket type (3 p. / 380 / 440V / 32A)

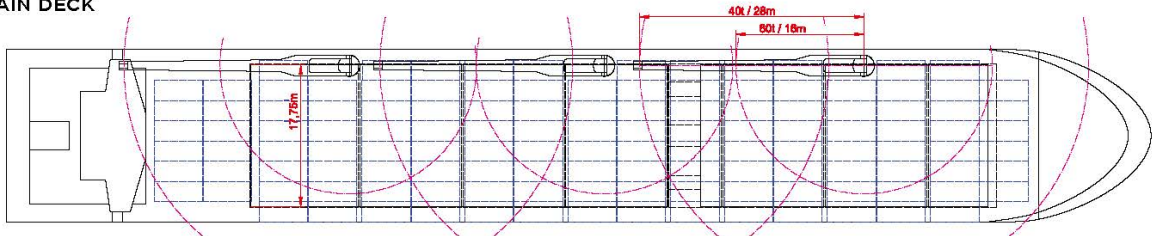
**Cargo Holds**

Hold No	Length, m	Breadth, m	Depth, m	Capacity, m <sup>3</sup>	Cargo hatches		Containers capacity 20"	
					Grain	Length, m	Breadth, m	Hold
1	35.86	17.79	15.0	7 629,6	36.17	18.27	446	421
2	52.16	17.79	15.2	12 411,0	52.88	18.27		
Main deck	6.48	17.66	-	-	-	-	-	24
Total:				20 040.6			446	445

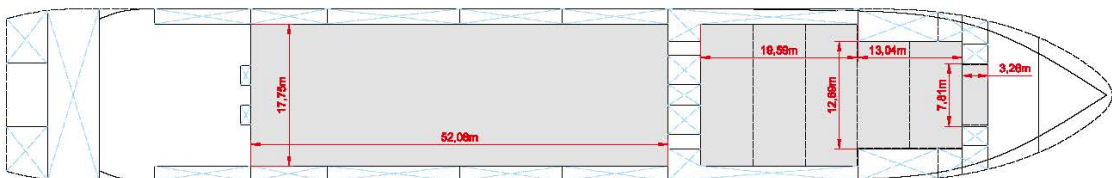
**SIDE VIEW**



**MAIN DECK**



**TWEENDECK**



**HOLDS & DOUBLE BOTTOM**

